



Murray Grey Newsbrief

National Murray Grey Sale **STOCKX**

a smarter exchange

Dear Fellow Members

This sale is going to take place on **Wednesday 6th September 2017**. All those intending entering stock should get in touch with **Mike Phillips (07 873 8115)** or **George Climo (03 327 6445)**.

As reported in the last newsbrief, StockX will be running this sale. Cattle for sale will be listed and available to be bid on from the 1st September with the final day Wednesday 6th September (closing at 8pm).

Any unsold cattle can be relisted on the StockX site. StockX has included all the relevant information for buyers and sellers in this newsbrief. We hope you will support this sale as the Murray Grey Society along with StockX have put a lot of time into organising this sale.

Are you buying or selling?

In order for you to list cattle for sale or to view the full listing details and place a bid during the sale, you will need to be a registered user on StockX.

It is FREE to register your Trading Entity – all you need to do is follow this link: <https://stockx.co.nz/Account/RegisterUser?Length=0> and complete the details. We will need a few things from you to complete your registration, so we can ensure a fast and secure payment process:

1. Photo ID (drivers license, passport or gun licence)
2. GST number for the registered Trading Entity
3. Bank Verification (a deposit slip, cheque or screenshot showing the bank logo, Trading Entity name and bank account number)

The StockX team will help you along the way, so if you have already started your registration and just need to complete it or need help getting started call them on **0508 786 259**. Their team will be in contact to let you know your registration is complete and will help you through the listing and bidding process.

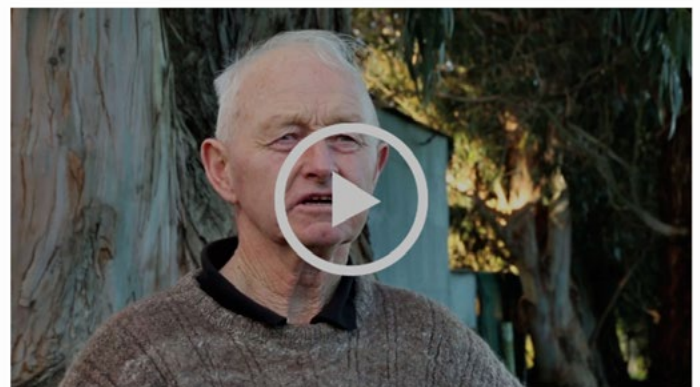
Here's a mock-up of the StockX bulk email that will promote the National Murray Grey Sale.

StockX - making bull sales stressfree!

[View this email in your browser](#)



N.Z. MURRAY GREY BEEF CATTLE SOCIETY



Hear what Joe Bloggs, Murray Grey Society President, has to say about this year's National Murray Grey Sale on StockX.

In conjunction with the **Murray Grey Society** we would like to introduce you to **StockX** - an online livestock exchange enabling farmers the opportunity to buy and sell livestock direct to each other at lower cost and enhanced value for both buyer and seller. StockX will be working with the Murray Grey Society this selling season to run their **NATIONAL MURRAY GREY SALE** so existing and new clients can source quality cattle suitable for their genetic requirements.

Sample continues overleaf...



NZ Murray Grey Breeders

ISSUE:
JULY 2017

PO BOX 503
75 SOUTH STREET,
FEILDING.

P: 06 323 4484
F: 06 323 3878
E: murraygreys@pbbnz.com
W: www.murraygreys.co.nz

COMPILED BY:
PIVOT DESIGN, PBBnz

All cattle will be listed on for sale on **Friday 1st September** with the sale closing on **Wednesday 6th September at 8pm.**

WHY STOCKX?

StockX launched in September 2015 and in that short time, over 2000 farmers from across New Zealand have registered to trade livestock. For the 2017 bull selling season StockX have offered a reduced sales commission of 1% on all bulls sold through their online exchange (their standard sales commission is 2.5% across all stock classes).

By selling through StockX you can market your livestock directly to buyers from across the country and develop direct relationships with new and existing clients. Buyers can access detailed information about your cattle online, such as EBVs, pedigree, TB Status and weights etc and all listings can contain photos and videos of the livestock. We encourage buyers to contact the seller directly and arrange to inspect the cattle if they wish.

StockX also provides payment and livestock quality guarantees for the seller and buyer. Buyers pay the full listing amount into a StockX audited trust account within 24 hours of their bid being accepted, and this money is held until the cattle arrive and the buyer is completely happy with the quality of the livestock they have purchased. Upon acceptance of the livestock the sales proceeds are immediately released to the seller less the sales commission (1% for bulls and 2.5% for other cattle). The StockX team is here to support you throughout the whole process.

MURRAY GREY CATTLE FOR SALE ON STOCKX:

The following cattle will be available for sale in the National Murray Grey Sale:

Murray Grey Example Bull 1234 is a great carcass bull with EMA 5.1 with positive fats, slightly high birth weight but has good growth. Excellent constitution and bone, a free moving bull.

Murray Grey Example Bull 2345 is a free moving homebred bull with a great temperament. Dark bull with good bone. Has excellent growth going out to +100 at 600 days.

Murray Grey Example Heifer 5678 - Sire MG Turbo 234, Dam MG Elle 456. Strong bone and muscle with a great temperament.

Murray Grey Example Heifer 9123 - Sire MG Hank 123, Dam MG Jess 789. A top quality heifer - Dam producing in top 10% of breed.

You are invited to inspect these cattle and contact the sellers directly for more information.



1 R2 Yr Breeding Bulls

Revilo Farms
Hawke's Bay

Price indication **\$4,000.00/hd**

Accepting offers now



1 R2 Yr Breeding Bulls

Revilo Farms
Hawke's Bay

Price indication **\$6,500.00/hd**

Accepting offers now



As you can see this is a comprehensive marketing tool to reach prospective buyers.



In conjunction with the Murray Grey Society we would like to introduce you to StockX - an online livestock exchange enabling farmers the opportunity to buy and sell livestock direct to each other at lower cost and enhanced value for both buyer and seller. StockX will be working with the Murray Grey Society this selling season to run their NATIONAL MURRAY GREY SALE so existing and new clients can source quality cattle suitable for their genetic requirements.

All cattle will be listed on for sale on **Friday 1st September** with the sale closing on **Wednesday 6th September at 8pm.**

WHY STOCKX?
StockX launched in September 2015 and in that short time, over 2000 farmers from across New Zealand have registered to trade livestock. For the 2017 bull selling season StockX have offered a reduced sales commission of 1% on all bulls sold through their online exchange (their standard sales commission is 2.5% across all stock classes).

By selling through StockX you can market your livestock directly to buyers from across the country and develop direct relationships with new and existing clients. Buyers can access detailed information about your cattle online, such as EBVs, pedigree, TB Status and weights etc and all listings can contain photos and videos of the livestock. We encourage buyers to contact the seller directly and arrange to inspect the cattle if they wish.

StockX also provides payment and livestock quality guarantees for the seller and buyer. Buyers pay the full listing amount into a StockX audited trust account within 24 hours of their bid being accepted, and this money is held until the cattle arrive and the buyer is completely happy with the quality of the livestock they have purchased. Upon acceptance of the livestock the sales proceeds are immediately released to the seller less the sales commission (1% for bulls and 2.5% for other cattle). The StockX team is here to support you throughout the whole process.

MURRAY GREY CATTLE FOR SALE ON STOCKX:

The following cattle will be available for sale in the National Murray Grey Sale:

Murray Grey Example Bull 1234 is a great carcass bull with EMA 5.1 with positive fats, slightly high birth weight but has good growth. Excellent constitution and bone, a free moving bull.

Murray Grey Example Bull 2345 is a free moving homebred bull with a great temperament. Dark bull with good bone. Has excellent growth going out to +100 at 600 days.

Murray Grey Example Heifer 5678 - Sire MG Turbo 234, Dam MG Elle 456. Strong bone and muscle with a great temperament.

Murray Grey Example Heifer 9123 - Sire MG Hank 123, Dam MG Jess 789. A top quality heifer - Dam producing in top 10% of breed.

You are invited to inspect these cattle and contact the sellers directly for more information.

 <p>1 R2 Yr Breeding Bulls Revilo Farms Hawke's Bay Price indication \$4,000.00/hd Accepting offers now</p>	 <p>1 R2 Yr Breeding Bulls Revilo Farms Hawke's Bay Price indication \$6,500.00/hd Accepting offers now</p>
 <p>1 R2 Yr Heifers Revilo Farms Hawke's Bay Price indication \$2,250.00/hd Accepting offers now</p>	 <p>1 R2 Yr Heifers Revilo Farms Hawke's Bay Price indication \$2,000.00/hd Accepting offers now</p>

Making sure you don't miss out!
In order for you to view the full listing details on StockX and purchase these cattle you will need to register on StockX. It is FREE to register your trading entity and there are no commissions or fees for you to purchase on StockX.

It's a very simple process to establish your StockX trading account. We manage the complete transaction for you - Sale and Purchase Agreements are copied to both the buyer and seller, funds are transacted via a Trust Account, and invoices are generated on behalf of the buyer and seller.

Because we look after the above banking and transactional functions we do require the following verification when you register that relates to your Trading Entity:

- Bank account verification (this can either be a copy of your bank deposit slip or other banking documentation)
- GST number for your Trading Entity (so we can create appropriate GST invoices)
- Photo ID (a copy of your driver's license or passport) - to match you to the Trading Entity you are registering.

Registration takes only a few minutes and can be started by clicking the green button below.

IF YOU NEED ANY ASSISTANCE AT ANY STAGE PLEASE CALL OUR TEAM ON 0508 786 259.

REGISTER NOW

StockX Strategic Partners



#joineconomy - Facebook | Twitter | Website | Email



Copyright © StockX | 2015 | StockX Systems Ltd. All rights reserved.
Our trading address is: PO Box 510, Hawke's Bay 5117 info@stockx.co.nz
0508 STOCKX (786 259)
What is the best way for you to reach us? You can update your preferences in your profile page.

It is **FREE** to register your Trading Entity – all you need to do is follow this link: <https://stockx.co.nz/Account/RegisterUser?Length=0> and complete the details.

FULL CONTACT DETAILS OF COUNCIL ARE AS FOLLOWS:

PRESIDENT: George Climo.....Greig's Drain Rd, RD 1, Kaiapoi 7691 • **P:** 03 327 6445 • **E:** ggclimo@farmside.co.nz

VICE PRESIDENT: Trevor Clarke 198 McLeavey Rd, RD 20, Levin 5570 • **P:** 06 368 6132 • **E:** yorkvale@xtra.co.nz

TREASURER: Wayne Allerby..... 569 Lincoln Rd, RD 9, Inglewood 4389 • **P:** 06 756 8162 • **E:** wallerby@xtra.co.nz

COUNCILLORS:

Carolyn Mcintosh.....31 Clifden Blackmount Road RD 2 Otautau 9682 • **P:** 03 225 5884 ccmcintosh@netspeed.net.nz

Micheal Phillips.....375 Turitea Road, RD 3, Otorohanga 3973 • **P:** 07 873 8115 • **E:** michealphillips@rocketmail.com

Tony Powell PO Box 106, Waimauku, Auckland 0842 • **P:** 09 411 8380 • **E:** di.tony.p@xtra.co.nz

Please contact a councillor if you would like any help with your Murray Grey business, especially if you're a new member.