

ISSUE
07

The Silver Bulletin

Newsletter of the New Zealand Murray Grey Society

May- July

2025



Welcome to our 2nd Newsletter for 2025

We hope this message finds all members and readers well, and that preparations for the fast-approaching calving season are coming together smoothly.

While in Southland, the soils are surprisingly dry as far as winter in the south goes.... it sounds like many other parts of the country are battling with persistent wet weather. We hope you're managing to stay on top of things as best you can, with cattle coping well despite the challenges.

With calving now just around the corner, it's hard to believe how quickly the season has rolled around again. We hope you've been able to steal a few quiet moments to rest and recharge. Wishing you all the very best as those new arrivals begin to hit the ground.

On the market front, beef prices continue to hold steady at encouraging levels, and the dairy sector remains relatively stable as well. We hope this brings a measure of confidence heading into bull sale season, and we wish all vendors and buyers the best of luck over the coming months.

Newsletter Contents:

| | |
|--|---------------|
| From The Presidents Paddock..... | Page 1 |
| Premier Cattle Co profile..... | Page 2 |
| Emerging leaders youth..... | Page 3 |
| Bull sales + council meeting notes..... | Page 4 |

From The Presidents Paddock: Barry Macdonald

Dear members

We are now well passed the shortest day and hopefully spring is just around the corner.

For most around the country it's been so far, a winter of rain, rain and more rain. My thoughts are with all those folk who've had to deal with record breaking events.

With a new season upon us it's pleasing to see that the prices for most farm products are maintaining strong momentum. For beef, the prices being received are for the most part unprecedented and the word is that in the short term they could go even stronger. We as bull breeders will be hoping that the strong sales seen in the autumn continue through to the spring editions.

Since the last newsletter single step analysis (genomics) has come to fruition. The April Breedplan summary was the first to incorporate genomics and breeders will have noticed

some changes in the EBVs for some traits on some animals.

As explained in correspondence prior to and post implementation, breeders who have animals they believe have changed too dramatically, can make contact with the team at ABRI (through PBB). By supplying the details of the animal(s) concerned the team can check the genomics outcomes.

A couple of explanation webinars have been held since implementation and are available online.

(Details were made available on the ADL letter). As suggested previously it is still important that breeders continue to measure and contribute raw data for as many traits as possible.

The AGM was held in early June and my thanks to those people who attended in person and online. The agenda was basically housekeeping. Since the meeting the annual accounts have been finalized and audited. One change sees the loss for the year more than the draft accounts submitted to the meeting. This is due to the auditing fees being placed in the year they relate to and not when invoiced as had happened previously. The past year therefore had two audit fees incorporated. The council is looking at ways to get the balance sheet back in surplus and options will be discussed at an upcoming council meeting.

Members will have received their female ADLs and I just need to remind breeders that they can be completed online and need to be returned by the end of July. We have also had a good response to calf registrations and again a reminder that a late fee now applies to calves registered after the appropriate timeline.

All the best for the calving season and to those breeders selling bulls over the next months.

Kind Regards

Barry Macdonald

Performance-Driven Pedigree

A Profile of Premier Cattle Co's Murray Grey Stud

Derek and Catherine Hayward

Established in 2018, Premier Cattle Co's Murray Grey stud has quickly earned a reputation for producing quiet, high-performance cattle with proven genetics and serious potential. The stud was founded with a clear vision: to build a quality-focused female herd using the very best maternal lines, with a strong emphasis on growth, structure, and temperament.

Our foundation females were carefully selected from the renowned Oakview Stud — a name synonymous with reliability, performance, and consistency. These bloodlines laid the groundwork for what has become a high-quality breeding operation that continues to grow in reputation and results.

From day one, our focus has been on breeding cattle that not only meet the demands of commercial producers but exceed them. Balanced EBVs, depth of pedigree, and robust maternal traits are key pillars of our program. We breed with a long-term mindset — targeting fertility, functionality, and frame, without compromising the softness and doing ability Murray Greys are known for. We're now gearing up for our Annual Yearling Bull Sale on September 25, 2025.

and it's shaping up to be a standout event.

We're thrilled to be offering the first sons of our exciting new Australian sire, Venturon Rectify R1.

His progeny are showing exceptional thickness, style, and structural integrity — ticking all the boxes we look for in a modern Murray Grey bull. Early results from this drop are very promising, and we're looking forward to getting these bulls into commercial herds where they'll make a real impact.

Premier Cattle Co is proud to be a family-run operation, and the next generation is already making their mark.

Our sons, Max and Jake, have established their own Murray Grey stud under the MJH prefix. Though still in its early stages with a foundation of six carefully selected females, MJH is already showing exciting potential. One of their young bulls will also feature in the 2025 sale — a proud moment for us as parents, and a reflection of the boys' growing passion for breeding quality cattle.

At Premier Cattle Co, we're proud to stand behind our cattle and the work we've put into building this herd from the ground up.

We invite fellow breeders, commercial buyers, and anyone with an interest in high-quality, performance-bred Murray Greys to join us on sale day and see the results for yourself.



Feature sire Venturon Rectify R1



A foundation female, Oakview Poppy P4

Inspiring youth leadership skills through hands-on cattle handling and showing

Emerging leaders

A unique opportunity

Emerging Leaders is a structured programme for youth offering practical, hands-on experience with young beef cattle. Participants learn to halter train and show cattle in a safe, supportive environment—building leadership skills, developing responsibility, and gaining confidence along the way.

The programme is suitable for young people aged 8–25 from all backgrounds, including those with no previous experience working with cattle or other farm animals. Some may be considering a future in the agricultural industry. Others may simply love animals and want the chance to work with them in a way that's rarely accessible outside of farming families.

Who's behind the programme

Emerging Leaders is run by Jason and Claire Hill, Hereford breeders based in Katikati. With a family passionate about cattle and a growing gap in opportunities for young people to get involved with handling livestock, they created a programme to make cattle handling and showing more accessible to youth, regardless of experience, background, or location.

What's involved

The animals will be kept at the Hill family's property in Katikati,

where participants can attend weekend and school holiday training sessions throughout the season.

The programme provides access to the cattle, halters, grooming gear, training support, and all other necessary equipment associated with handling and showing young beef cattle. Transport is also arranged for the animals to attend shows.

Taking part in shows

Participants will handle and present cattle in the beef section competitions at A&P shows across the Bay of Plenty and Waikato regions. Having a dedicated show team gives young people who don't have the means to raise and train their own animals the opportunity to take part in cattle shows.

Participants are responsible for their own transport to and from the training days and showgrounds.

Young heifers from leading farms

The Emerging Leaders show team will be made up of young heifers selected each season from quality beef cattle studs and commercial farms throughout New Zealand. A selection of heifers from at least six different beef breeds will be chosen on docility and correctness of the animal. A mix of purebred and cross bred cattle will be used so the participants can learn about different breeds.

View full information document here

https://www.canva.com/design/DAGvAEnmgLw/S_LVh2dtFp1RWqaaPJ5ngQ/view?utm_content=DAGvAEnmgLw&utm_campaign=designshare&utm_medium=link&utm_source=uniqueinks&utm_id=h7784539bc3



Upcoming Bull sales

Mangaotea

Thursday the 11th of September
@12.00pm

Sale held onsite + Online Bidr
Ratapiko 📍
blackwellholdings2018@xtra.co.nz

Premier Cattle co

Friday the 26th of September
@12.00pm

Sale held onsite + Online bidr
Te Miro 📍
derek.premier@farmside.co.nz

Torrisdale

Wednesday the 8th of October
@11.30am

Sale held onsite + Online Bidr
Winton 📍
ballyhooleymac@gmail.com

Silver fern

Monday the 13th of October
@12.00pm

Onsite helmsman Auction
Otautau 📍
ccmcintosh@netspeed.net.nz

Latest council meeting

Summary of Council Meeting 31/07/2025

- ☑ Zarah Blackwell reelected as Vice President.
- ☑ Peter Stachurski reelected as Treasurer.
- ☑ Reviewed/audited 2024/25 financials approved showing an increase in loss, due in most part to incorporating the review/audit fee into the year being reviewed rather than the year of invoice. Hence two fees in the 24/25 year.
- ☑ Council approved that some monies from the reserves be loaned to PBB at a much better interest rate than currently available from a bank. This is to help with the PBB overdraft facility. Other shareholder societies also involved. Amount of loan to be discussed further with PBB.
- ☑ In line with the CPI increases, council approved 2025 dam fees of \$26.50, Annual Membership fee \$175.
- ☑ Council discussed proposed Breed Index updates. Further discussion with ABRI to take place. Additional indexes being looked at.

- ☑ In line with the CPI increases, council approved 2025 dam fees of \$26.50, Annual Membership fee \$175.
- ☑ Council discussed proposed Breed Index updates. Further discussion with ABRI to take place. Additional indexes being looked at.
- ☑ The society, along with most organizations, has to have an updated constitution in place by April 2026. We have started that process. At some stage a special meeting will have to be called to approve the revised constitution.
- ☑ Discussion on a proposed 'photo competition' to raise funds.
- ☑ An outline of problems with the website with regard to membership lists not displaying. All societies are affected. PBB trying to resolve the issue.
- ☑ An approach from PBB to consider having clearer 'rules' with regards to who/what owns genetic material (DNA) once it has been submitted for analysis and the ongoing use of that material. Currently, few societies have clear regulations.



Photo credit - Janice Badger

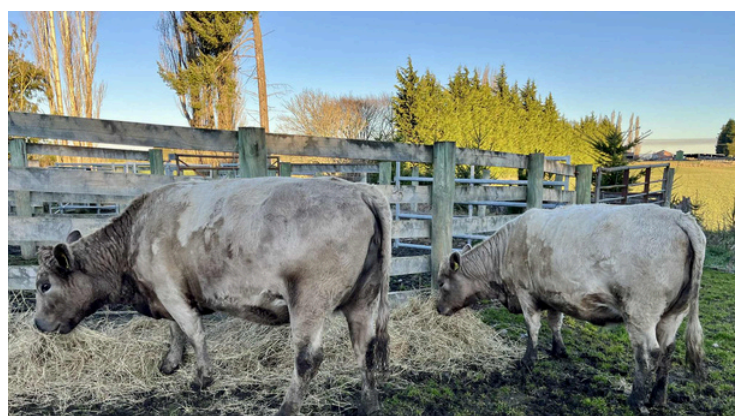


Photo credit - Charlotte Hunt

REMINDER: THE YEAR TATTOO FOR 2025 IS W

The recording system does not allow for an animal to be registered if the year tattoo does not correspond to the year of birth. **2024** the year tattoo is **V**, **2025** the year tattoo is **W**. While animals **don't** have to be physically tattooed, they still have to be registered with a tattoo. (it's just the way the system works). You also don't have to tag your calves with the year letter if you don't want to or name them according to the year letter.

WANTED - CONTENT FOR OUR NEWSLETTER!

The only way we can keep this Newsletter interesting and informative is to have contribution from our members – photos, articles on bulls/cows, updates from around the country – please make sure you drop the editor a line (and a few Murray Grey Photos!)

Deadline for the next Newsletter is 20th October:

Email: clhunt2009@gmail.com

Murray Grey Council Members

President:

Barry Macdonald : ballyhooleymac@gmail.com

Vice President:

Zarah Blackwell: blackwellholdings2018@xtra.co.nz

Treasurer:

Peter Stachurski: peterstack240965@gmail.com

Tony Powell: di.tony.p@xtra.co.nz

Caitlin Brooks: Caitlin.brooks@crv4all.co.nz

Hayden Fletcher: handmpastoral@gmail.com